



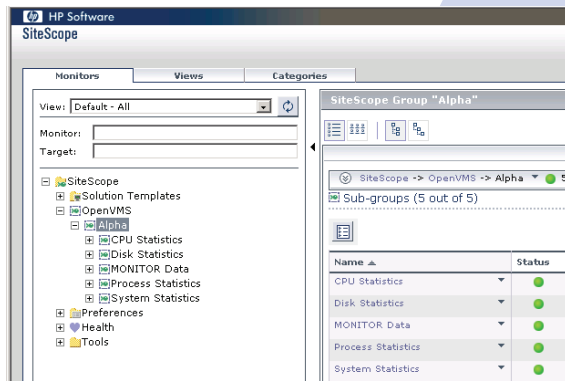
COMTEK NMServer for OpenVMS

Data Sheet

Your SNMP Manager can Monitor OpenVMS Servers

Your OpenVMS Systems are Mission Critical. Businesses and Government Agencies depend on their VMS servers for critical operations such as Communications Systems, Financial Applications, Emergency Systems, and Manufacturing Control. COMTEK NMServer for OpenVMS allows any SNMP Network Manager such as Tivoli, SolarWinds, SiteScope, OpenView or SNMPc to effectively monitor HP OpenVMS Systems.

COMTEK /OpenVMS (formerly COMTEK NMServer SNMP Agent for OpenVMS) is designed for HP OpenVMS systems (VAX, Alpha or Itanium). COMTEK /OpenVMS allows SNMP Network Managers to monitor these systems remotely. COMTEK /OpenVMS maintains important performance and resource utilization and reports this information to the SNMP Manager when polled. COMTEK /OpenVMS sends Traps (alarms) to notify the Manager of critical events such as Critical Process Stopped, Disk Nearly full or CPU Overload.



Monitor System Health

System Errors. COMTEK /OpenVMS reports system errors that are detected on disks, tapes, buses, CPU and memory as traps.

Opcom Messages and Replies. COMTEK /OpenVMS converts system Opcom messages into traps. The user may specify message filters to eliminate redundant or unimportant data.

Application Logs. COMTEK /OpenVMS can monitor and filter user data. This feature can be particularly useful for processing of application log files.

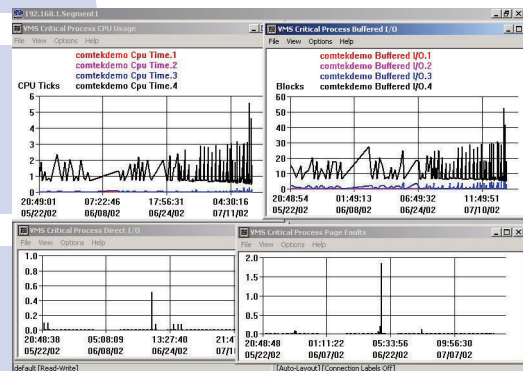
Monitor Resources and Performance

System Utilization. COMTEK /OpenVMS oversees page file, swap file and physical memory utilization and sends traps when usage exceeds user defined thresholds.

CPU. COMTEK /OpenVMS maintains statistics on CPU util. in each processor mode in 1, 5 & 15 min. increments.

Disks. COMTEK /OpenVMS collects statistics on logical disks and monitors disk utilization levels. Disk utilization thresholds are set system wide with the option of specifying additional thresholds for specific critical logical disks. Thresholds may be specified in terms of percent full or minimum free space requirements.

Queues. COMTEK /OpenVMS watches user specified critical queues and their entries, sending traps to indicate problems with queues or queue entries.



Monitor Processes

Active Processes. COMTEK /OpenVMS gathers statistics on current processes and analyzes them to determine if the system is compute bound or if processes are in resource wait (MWAIT) state.

Mission Critical Processes. COMTEK /OpenVMS sends a TRAP if a user specified mission critical process has failed.

OpenVMS Agent Trap Summary

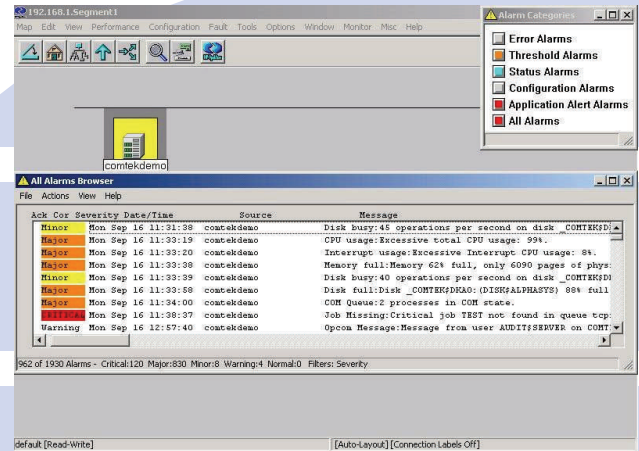
Mission Critical Process Missing • User Trap • Page File Full • Swap File Full • Memory Full • Excessive CPU Utilization • Excessive Interrupts • Disk Full • Excessive Disk I/O • Disk Status Change • Disk I/O Queue Length • Shadow Set Failure • Shadow Set Copy • Shadow Set Merge • Queue Status Change • Queue Entry Status Change • Critical Job Missing • Excessive COM Processes • Excessive COMO • Process in MWAIT State • Excessive MWAIT Processes • Opcom Message • Hardware Error • Cold Start • Warm Start • Process Termination

OpenVMS Agent MIB Overview

System Information: Node Name • Hardware Name • System Boot Time • Operating System Version • Available/Active CPU Counts • Page Size • Physical Memory • Page File • Swap File

Resource Information: CPU • Disk • Shadow Set • Queues and Queue Entries • Active Processes • Mission Critical Processes

Status Information: Hardware Errors • Opcom Messages • Agent Configuration • Configuration Information • User Specified Trap Thresholds • User Specified Time Intervals For Statistics Gathering



COMTEK /OpenVMS Package

COMTEK /OpenVMS includes the agent, sample configuration files, user guide, installation aids, and sample programs. COMTEK /OpenVMS is compatible with TCP/IP Services, MultiNet and TCPware., To install COMTEK /OpenVMS, simply use VMSINSTAL, configure a few parameters, and upload MIB to the Network Manager.

PREREQUISITES

OpenVMS version 5.5-2 or later; TCP connectivity to the Network Manager.

LICENSING AND WARRANTY

COMTEK products are licensed on a per node basis and carry a money back guarantee. Quantity and corporate discounts are available.

MAINTENANCE

Maintenance is provided via FTP, e-mail, phone and fax on a 24x7 basis.

Other COMTEK products are available for IBM iSeries (AS/400, OS/400), and Stratus VOS.

© Copyright 2010 COMTEK Services, LLC. The information contained herein is subject to change without notice. Nothing herein should be construed as constituting an additional warranty. COMTEK shall not be liable for technical or editorial errors or omissions.

COMTEK Services is a software company specializing in Remote Server Monitoring via SNMP.

COMTEK has been providing SNMP products to the Telecom, Banking, Stock Exchange, Investment, Finance, Food and Pharmaceutical industries since 1998. **COMTEK** products are monitoring thousands of computers in Africa, Asia, Australia, Europe, and the Americas. **COMTEK** facilities are located in Texas, New Hampshire, North Carolina, and Virginia. Support is provided worldwide. NMServer, COMTEK, and COMTEK /OpenVMS are trademarks of COMTEK Services, LLC. VMS, OpenVMS, Itanium, Alpha, IBM, HP, Mercury, Tivoli, Castle Rock Computing, SNMPc, SiteScope, AS/400, Compuware, OpenView, Vantage, IBM, OS/400, Orion, SolarWinds and iSeries may be trademarks of their respective companies.



COMTEK Services, LLC • Phone: (603) 881-9556
Nashua New Hampshire • Fax: (603) 881-5504
<http://www.COMTEKSERVICES.com>